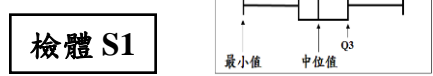
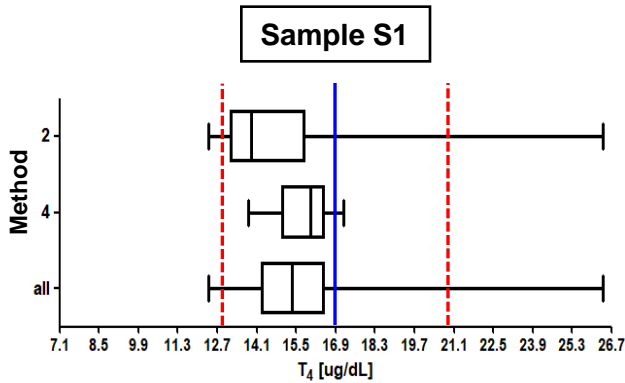


CHT2017-04 批次 T₄ 檢驗院際品管調查結果統計分布圖

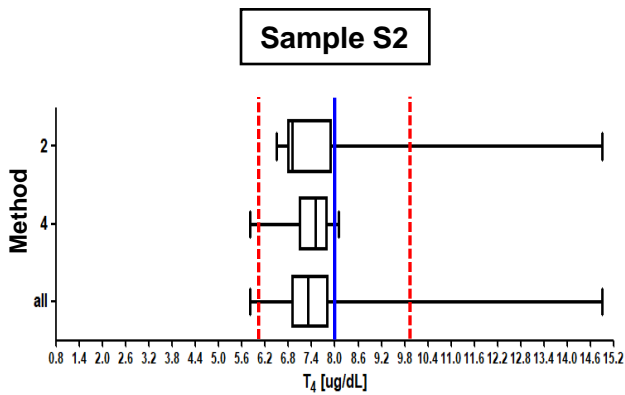
調查批次：CHT2017-04 檢體寄出日期：2017 年 09 月 25 日 報告截止日期：2017 年 10 月 02 日

回收份數(比率)：22 份 (100%)



| Method | 檢驗單位數 | 中位值 (Median) | 平均值 (Mean) | 標準差 (SD) | 變異係數 (CV) |
|--------|-------|--------------|------------|----------|-----------|
| 2 | 7 | 13.9 | 14.3* | 1.84* | 12.9% |
| 4 | 15 | 16.0 | 15.7* | 1.07* | 6.8% |
| All | 22 | 15.4 | 15.3* | 1.52* | 9.9% |
| AEL** | 112 | 16.1 | 16.2 | 1.51 | 9.3% |

Certified assigned value : 16.9 µg/dL

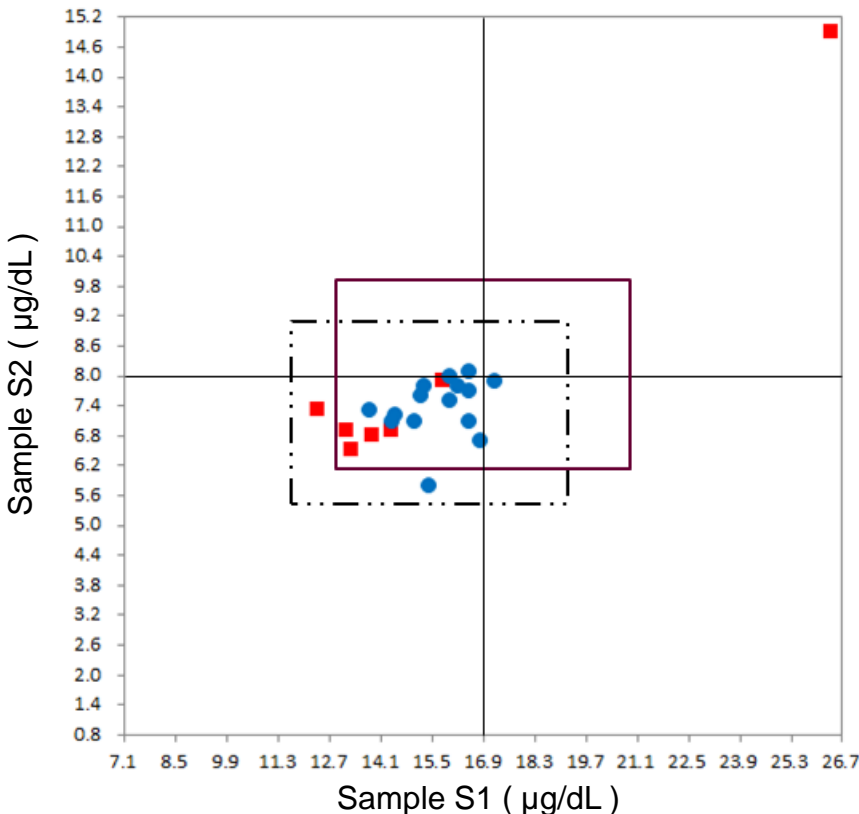


| Method | 檢驗單位數 | 中位值 (Median) | 平均值 (Mean) | 標準差 (SD) | 變異係數 (CV) |
|--------|-------|--------------|------------|----------|-----------|
| 2 | 7 | 6.9 | 7.2* | 0.77* | 10.7% |
| 4 | 15 | 7.5 | 7.4* | 0.52* | 7.0% |
| All | 22 | 7.3 | 7.4* | 0.60* | 8.1% |
| AEL** | 112 | 7.7 | 7.7 | 0.74 | 9.6% |

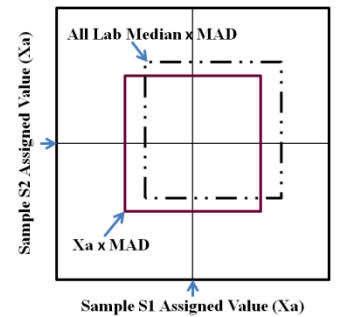
Certified assigned value : 8.0 µg/dL

* Calculated by robust method (ISO 13528 ; Algorithm A)

** All European Laboratories



Youden Plot 圖例說明



■ Method 2 (RIA)

● Method 4 (CLIA)

MAD : Maximum Allowable Deviation